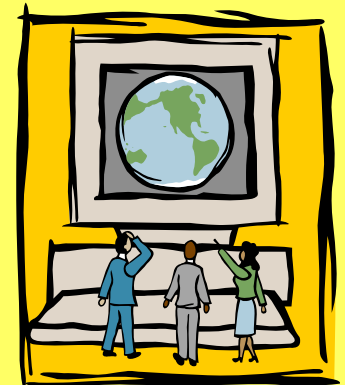
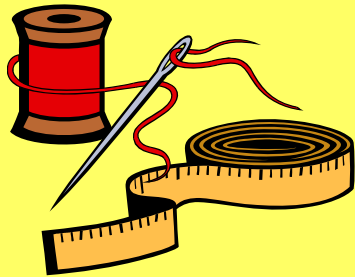


**8<sup>TH</sup> GRADE**

**ENCORE**

**ELECTIVES**



**Filling out the forms**

Parent Signature \_\_\_\_\_ (Indicates approval of child's selection)

Seventh grade students are being given the opportunity to select elective courses for their 8th grade year. All 8th graders will take the equivalent of (3) full-year exploratory classes. Physical Education is a mandatory class. Students may choose their remaining classes from the selections listed below. Parents should read over the choices that are available and discuss the different options with the student. It is important that you give careful consideration when choosing classes, as staffing and scheduling are influenced by student choice; changes cannot be made after classes are assigned. Every effort will be made to provide each student with his/her top choices, but in the event that particular classes reach maximum enrollment, it may be necessary to assign the next preference. Registration forms will be processed and class assignments made (based on choices in which they are ranked in the course list.)

**These Note - All 8th graders will take CONNECTIONS as part of their core schedule. Students will be assigned a core teacher for CONNECTIONS, an advisory program to create an environment that fosters personal, social, and academic growth.**

**DIRECTIONS:**

- 1) Band, Chorus or Orchestra students should check the appropriate class. They should continue to the next section and then prioritize their selections by numbering 1 through 10 (with number 1 being the class they want the most.)
- 2) Students not taking Band, Chorus or Orchestra should proceed to the ELECTIVES section.
- 3) Parents should be sure to sign the registration form at the top, right-hand side.
- 4) Forms should be returned no later than Thursday, February 23rd.

**BAND - ORCHESTRA - CHORUS - To sign up, you must currently be in the band or orchestra program!**

If Band, Chorus, Orchestra, Combo Band/Chorus, or Combo Orchestra/Chorus is one of your choices, indicate this choice by placing an X on the appropriate Combo course (i.e. Band/Chorus or Orchestra/Chorus) will be scheduled on an alternate day basis. Please continue to the next section. In addition to your choice of section, you will be scheduled for either a rehearsal class or one student class.

2782 _____ Band	992782 - 992785 _____ Combo Band/Chorus
2783 _____ Chorus	
2787 _____ Orchestra	992787 - 992795 _____ Combo Orchestra/Chorus

**ELECTIVES**

All students fill out the following. Prioritize your choices by numbering the following classes (1 through 10 - number 1 would be the class you want to take the most). Students not participating in Band, Chorus or Orchestra will be scheduled for either 1 rehearsal class and 2 student classes, or students will be scheduled for 4 student classes.

3982 _____	Introduction to Spanish (year long class)* Must be either your <u>HIGHEST</u> or your <u>LAST</u> choice!
2694 _____	Design & Craft
2625 _____	Drawing & Painting
3794 _____	Food
3785 _____	Sewing
9362 _____	Exploring Technology
9361 _____	Manufacturing Technology
3820 _____	Advanced Computer
3980 _____	Communication Arts I
3981 _____	Communication Arts II

**These Note - Assessments will be conducted to determine a student's eligibility for our Reading Improvement Program. Qualifying students will be required to take strategic reading course in lieu of an elective choice or choices. Parents/students who qualify will be contacted in the spring to make adjustments in their elective choices. Please call Ms. Quinn (375-3443) 7th grade number, if you have any concerns.**

# 8th Grade Elective Form



Parent Signature (indicates approval of child's selections)

Seventh grade students are being given the opportunity to select elective courses for their 8th grade year. All 8th graders will take the equivalent of (3) full-year exploratory classes. Physical Education is a mandatory class. Students may choose their remaining classes from the selections listed below. Parents should read over the choices that are available and discuss the different options with the student. It is important that you give careful consideration when choosing classes, as staffing and scheduling are influenced by student choices; changes cannot be made after classes are assigned. Every effort will be made to provide each student with his/her top choices, but in the event that particular classes reach maximum enrollment it may be necessary to assign the next preference. Registration forms will be processed and class assignments made (based on the order in which they are returned to the counselor.) Please Note - All 8th graders will take CONNECTIONS as part of their core schedule. Students will be assigned a core teacher for Connections, an advocacy program to create an environment that fosters emotional, social and academic growth.

#### DIRECTIONS:

- 1) Band, Chorus or Orchestra students should check the appropriate class. They should continue to the next section and then prioritize their selections by numbering 1 through 10 (with number 1 being the class they want the most.)
- 2) Students not taking Band, Chorus or Orchestra should proceed to the ELECTIVES section.
- 3) Parents should be sure to sign the registration form at the top, right hand side.
- 4) Forms should be returned no later than Thursday, February 23rd

**BAND - ORCHESTRA - CHORUS** - To sign up you must currently be in the band or orchestra program!

If Band, Chorus, Orchestra, Combo Band/Chorus, or Combo Orchestra/Chorus is one of your choices, indicate that choice by placing an X on the respective line. Combination courses (ie. Band/Chorus or Orchestra/Chorus) will be scheduled on an alternate day basis. Please continue to the next section. In addition to your music selection, you will be scheduled for either a morning class or two semester classes.

2780	2788	Band	992788 - 992789	Combo Band/Chorus
2785		Chorus		
	2787	Orchestra	992787 - 992788	Combo Orchestra/Chorus

#### ELECTIVES

All students fill out the following. Prioritize your choices by numbering the following classes (1 through 10 - number 1 would be the class you want to take the most. Students not participating in Band, Chorus or Orchestra will be scheduled for either 1 morning class and 1 semester class, or students will be scheduled for 2 semester classes.

3982	___	Introduction to Spanish (year long class) * Must be either your <u>FIRST</u> or your <u>LAST</u> choice!
2484	___	Design & Crafts
2483	___	Drawing & Painting
3784	___	Foods
3783	___	Sewing
93482	___	Exploring Technology
93481	___	Manufacturing Technology
3880	___	Advanced Computer
3980	___	Communication Arts I
3981	___	Communication Arts II

•Classes assigned on first come basis

•Earlier turn in means you likely will get the classes you want



Moving

Parent Signature (indicates approval of child's selection)

Seventh grade students are being given the opportunity to select elective courses for their 8th grade year. All 8th graders will take the equivalent of (3) full-year exploratory classes. Physical Education is a mandatory class. Students may choose their remaining classes from the selections listed below. Parents should read over the choices that are available and discuss the different options with the student. It is important that you give careful consideration when choosing classes, as staffing and scheduling are influenced by student choices; changes cannot be made after classes are assigned. Every effort will be made to provide each student with his/her top choices, but in the event that particular classes reach maximum enrollment it may be necessary to assign the next preference. Registration forms will be processed and class assignments made (based on the order in which they are returned to the counselor.) Please Note - All 8th graders will take **CONNECTIONS** as part of their core schedule. Students will be assigned a core teacher for Connections, an advocacy program to create an environment that fosters emotional, social and academic growth.

#### DIRECTIONS:

- 1) Band, Chorus or Orchestra students should check the appropriate class. They should continue to the next section and then prioritize their selections by numbering 1 through 10 (with number 1 being the class they want the most.)
- 2) Students not taking Band, Chorus or Orchestra should proceed to the ELECTIVES section.
- 3) Parents should be sure to sign the registration form at the top, right hand side.
- 4) Forms should be returned no later than Thursday, February 23rd.

**BAND - ORCHESTRA - CHORUS** - To sign up you must currently be in the band or orchestra program!

If Band, Chorus, Orchestra, Combo Band/Chorus, or Combo Orchestra/Chorus is one of your choices, indicate that choice by placing an X on the respective line. Combination courses (i.e. Band/Chorus or Orchestra/Chorus) will be scheduled on an alternate day basis. Please continue to the next section. In addition to your music selection, you will be scheduled for either a morning class or two semester classes.

2780	2788	Band	992788 - 992785	Combo Band/Chorus
2785		Chorus		
	2787	Orchestra	992787 - 992785	Combo Orchestra/Chorus

#### ELECTIVES

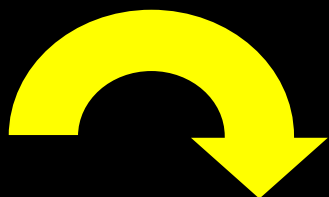
All students fill out the following. Prioritize your choices by numbering the following classes (1 through 10 - number 1 would be the class you want to take the most. Students not participating in Band, Chorus or Orchestra will be scheduled for either 1 morning class and 1 semester class, or students will be scheduled for 2 semester classes.

3982	___	Introduction to Spanish (year long class) * Must be either your <b>FIRST</b> or your <b>LAST</b> choice!
2484	___	Design & Crafts
2483	___	Drawing & Painting
3784	___	Foods
3783	___	Sewing
93482	___	Exploring Technology
93481	___	Manufacturing Technology
3880	___	Advanced Computer
3980	___	Communication Arts I
3981	___	Communication Arts II

• **Must** have parent's signature

• Must be marked following directions

• Moving? Fill out form and write **Moving** on the top.



***BAND - ORCHESTRA - CHORUS*** - *To sign up, you must currently be in the band or orchestra program!*

If Band, Chorus, Orchestra, Combo Band/Chorus, or Combo Orchestra/Chorus is one of your choices, indicate that choice by placing an **X** on the respective line. Combination courses (i.e. Band/Chorus or Orchestra/Chorus) will be scheduled on an alternate day basis. Please continue to the next section. *In addition to your music selection, you will be scheduled for either a yearlong class or two semester classes.*

2788 \_\_\_\_\_ **Band**

992788 - 992785 \_\_\_\_\_ **Combo Band/Chorus**

2780

2785 \_\_\_\_\_ **Chorus**

2787 \_\_\_\_\_ **Orchestra**

992787 - 992785 \_\_\_\_\_ **Combo Orchestra/Chorus**



## ELECTIVES

All students fill out the following. Prioritize your choices by numbering the following classes (1 through 10 - number 1 would be the class you want to take the most. Students not participating in Band, Chorus or Orchestra will be scheduled for either: 1 yearlong class and 2 semester classes, or students will be scheduled for 4 semester classes.

Rank 1 OR 10	3982	___	Introduction to Spanish (yearlong class) * <u>Must be either your FIRST or your LAST choice!</u>
	2684	___	Design & Crafts
	2685	___	Drawing & Painting
	3784	___	Foods
	3785	___	Sewing
	93682	___	Exploring Technology
	93681	___	Manufacturing Technology
	3880	___	Advanced Computer
	3980	___	Communication Arts I
	3981	___	Communication Arts II

**Rank IN ORDER  
your choices**

# Parent Signature

Granger Middle School - 8th Grade Electives - 2006 - 2007



A handwritten signature in black ink, enclosed within a blue rectangular border. The signature is written over a horizontal line.

Parent Signature (indicates approval of child's selections)

# is required

# DUE ON:

## DIRECTIONS:

- 1) Band, Chorus or Orchestra students should check the appropriate class. They should continue to the next section and then prioritize their selections by numbering 1 through 10 (with number 1 being the class they want the most.)
- 2) Students not taking Band, Chorus or Orchestra should proceed to the ELECTIVES section.
- 3) Parents should be sure to sign the registration form at the top, right-hand side.
- 4) Forms should be returned no later than: Thursday, February 23rd

# February 23

**Make decisions based  
on your likes and interests**



**Make decisions as a family**