

# MESSAGE FROM THE SUPERINTENDENT



Dear District 204 Community,

I am pleased to welcome each of you to what promises to be a great year in District 204. The start to any school year brings excitement, energy and of course, changes. The changes this year are especially interesting as we welcome two new schools to our community. Metea Valley High School and Fischer Middle School will open their doors on time. The staff and administration can't wait to greet their outstanding students and families.

Another change involves schedule adjustments at all schools on Wednesday mornings. Our staff will take part in professional development on Wednesday mornings throughout this school year, with special attention placed on meeting the needs of each and every student. Raising student achievement remains our focus, along with fiscal responsibility, and increased communication.

Many new things are happening in our support services area as well. Our new food service provider, Chartwells, will now be serving meals to our students. Our transportation system has been reworked to make route information more accessible to students and parents, as well as to proactively address student safety.

More information on all these initiatives is included in this mailing. You can also find information on our website, [www.ipdsd.org](http://www.ipdsd.org). While you are on our website, I encourage you to subscribe to 204 E-News to receive important district information via email. We want to maintain strong communication with our families to build success for our most important resource — our students.

Take care and enjoy the rest of your summer.

**Dr. Kathryn Birkett**  
Superintendent

NON-PROFIT ORG.  
U.S. POSTAGE  
PAID  
PERMIT NO. 32  
NAPERVILLE, IL

INDIAN PRAIRIE SCHOOL DISTRICT 204  
780 SHORELINE DRIVE, AURORA, IL 60504

WHAT'S  
NEW  
THIS YEAR?

PROFESSIONAL  
DEVELOPMENT  
WEDNESDAYS

SCHOOL LUNCHESES

TRANSPORTATION

# WHAT'S NEW THIS YEAR?

2009-2010



780 SHORELINE DRIVE, AURORA, IL 60504  
(630) 375-3000 [WWW.IPSD.ORG](http://WWW.IPSD.ORG)

# WHAT'S NEW THIS YEAR?

## PROFESSIONAL DEVELOPMENT WEDNESDAYS

District 204 is adjusting the starting time for all students on Wednesday mornings for the 2009-10 school year. We believe this change will benefit our students through providing school-wide opportunities for our teachers to collaboratively work on improving student learning.

This set block of time for teachers to work together will occur each Wednesday before school. Elementary teachers will have 60 minutes and middle and high school teachers will have 50 minutes before school.

## The start of the school day is adjusted slightly to accommodate this program on Wednesday mornings.

High School Staff.....6:55am  
 High School Students.....7:45am  
 Middle School Staff.....7:30am  
 Middle School Students.....8:20am  
 Elementary School Staff.....8:00am  
 Elementary School Students.....9:15am

The district is assisting elementary parents who might not have flexibility in their morning schedules. Elementary school parents unable

to make the 10 minute adjustment can drop off their student at the same time as other school days, and supervision will be provided for those additional 10 minutes. Details will be available from your elementary school prior to the start of school.

If your student rides the bus to school, on Wednesdays, the pick-up times for elementary buses will simply move 10 minutes later and middle and high school pick-up times will move 20 minutes later.

Instruction time will be adjusted on Wednesdays based on the grade level. At the elementary level, options include adjusting morning routines, such as calendar time and morning announcements. At the middle and high school levels, there will be a balance of instruction time for each class by shortening each period by approximately 2.5 minutes on Wednesdays.

Before-school extracurricular activities will not be scheduled on Wednesday mornings to allow teacher participation in this program.

## SCHOOL LUNCHES

Indian Prairie joined the majority of school districts across the country that participate in the USDA National School Lunch Program (NSLP). The fiscally responsible decision to join the NSLP will allow the district to receive federal reimbursement for all meals served. The NSLP incorporates the USDA Healthy Choice Guidelines for a Gold Standard Program, which complements the district's Wellness Policy. Indian Prairie has also changed its

food service provider to Chartwells. Students will be able to choose from several entrees and side choices plus milk to create their meal. Elementary students will experience the same type of meal choices previously offered, while middle and high school students will experience a lunch program that offers the same types of choices at less cost. Lunch, including milk, is \$2.25 in elementary schools and \$2.30 in middle and high schools.

**With the move to the NSLP, the district is no longer able to offer elementary parents the option of paying an annual fee to cover the cost of purchasing milk for the year.** If purchased separately, a carton of milk is now priced at 40¢ for white and 50¢ for flavored milk at all schools.

The district continues to offer the free lunch program to families who meet federal income guidelines. Additional guidelines are available for families with limited income who may qualify to receive reduced meals for 40¢ each. Applications and guidelines are available on the district's website and on each school's website.

Last year, parents could add money to a child's lunch account online through CafePrepay. **This year, the district is offering parents MealpayPlus, a free, secure online account where you can check account balances, monitor items purchased in the cafeteria, and create personalized settings to receive email notification when an account has a low balance.** Prepayments to a student's meal

account can be made through MealpayPlus for a small fee using a check, credit or debit card.

To register for a free MealpayPlus account or to view lunch menus, including pricing, visit the district's website at [www.ipspd.org](http://www.ipspd.org).

## TRANSPORTATION

On August 15, the district is launching e-Link, a user-friendly online system that provides parents with bus stop information. Parents can visit the district's website and type in their home address to find personalized bus route information, including the distance from their house to the bus stop and the distance from their child's bus stop to school.

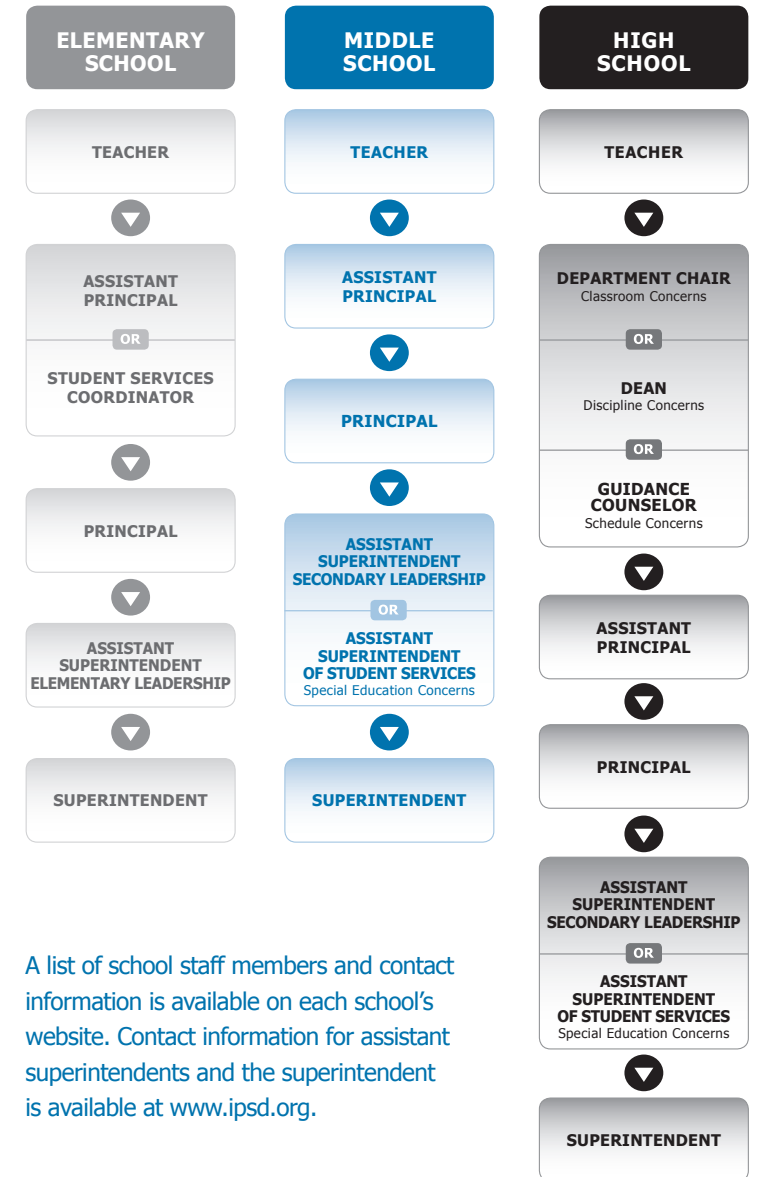
The transportation department is also introducing several initiatives to proactively address student safety.

**This year, all students eligible for transportation in grades 6 through 12 will be required to present their student ID card when boarding the morning and afternoon buses.** Students will be given time during the first week of the school year to adjust to this new routine. Please note, students without an ID card will be allowed to board the morning bus to school, but students will need to obtain a new ID card or temporary bus pass from the school before boarding the afternoon bus.

**All kindergarten through eighth-grade students will have assigned seats on the bus.** Students will select their own seats once school begins and can change seats at the semester break.

# WHERE TO GO IF YOU HAVE A CONCERN

Generally speaking, questions or concerns should first be discussed with the staff member who is closest to the situation. It is always best to follow the chain of command to ensure that all parties involved are properly informed of the situation. Parents should expect a response from the staff person listed, or his or her designee, within one business day to discuss their concern.



A list of school staff members and contact information is available on each school's website. Contact information for assistant superintendents and the superintendent is available at [www.ipspd.org](http://www.ipspd.org).